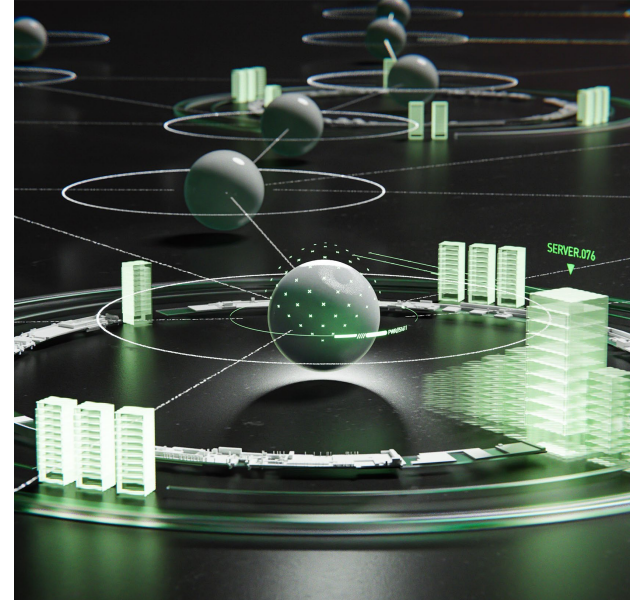




Base Command Manager

Cluster management software for AI and HPC.



Easily Build and Manage AI Infrastructure

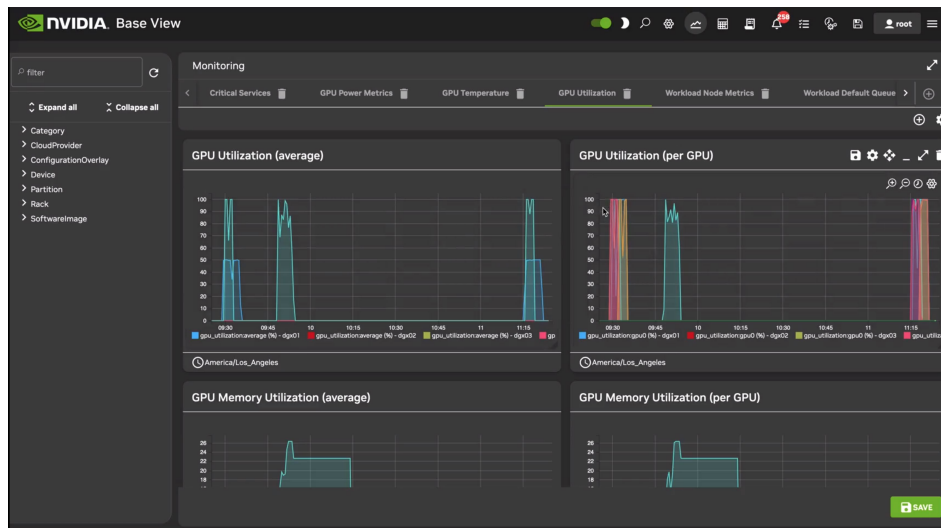
Powerful new hardware, applications, and software have system administrators struggling with complexity while striving to provide a system that's both flexible and reliable for end users.

NVIDIA Base Command™ Manager allows you to deploy complete Linux clusters over bare metal and manage them reliably from edge to core to cloud. Providing cluster management solutions for AI and high-performance computing (HPC) workloads, NVIDIA Base Command Manager combines provisioning, monitoring, and management capabilities in a single tool that spans the entire lifecycle of your cluster.

With NVIDIA Base Command Manager, you can manage your entire cluster, from AI and analytics applications to traditional HPC, from bare metal to containers, from the edge to on premises to the public cloud and hybrid cloud.

Key Benefits

- > Simplify deployment
- > Automate the cluster build and validation
- > Bring all apps and environments under a single management platform
- > Leverage comprehensive monitoring
- > Integrate with public and private clouds
- > Manage accelerators
- > Optimize the use of cluster resources
- > Configure and deploy HPC workload managers and Kubernetes
- > Utilize three user interfaces: command line, web-based graphical, and API



You decide which metrics to monitor. Simply drag a component into the display area, and Base Command Manager creates a graph of the data you need.

NVIDIA Base Command Manager Solutions

> Clusters for AI and HPC

Base Command Manager is available for free for up to eight accelerators per NVIDIA GPU-accelerated and other systems, for any cluster size. For information on how to purchase support for the free license, contact your authorized NVIDIA Enterprise Partner. This will not include support for NVIDIA GPU Operator, NVIDIA Network Operator, and NVIDIA vGPU. Support for Base Command Manager and these features are included with [NVIDIA AI Enterprise](#) or [NVIDIA Mission Control](#).

> Clusters for Hybrid Cloud

This solution automates the process of building and managing a Linux cluster, as well as the process of extending an on-premises cluster to the public cloud.

> Clusters as a Service

Organizations can quickly and efficiently spin up high-performance clusters on demand using resources in public clouds.

> Clusters for Edge Computing

Organizations can deploy and centrally manage distributed computing resources as a single clustered infrastructure from a single interface.

What's New in NVIDIA Base Command Manager 10

NVIDIA Base Command Manager 10 streamlines cluster management across NVIDIA hardware, software, and AI platforms. It is included as a part of NVIDIA Mission Control and NVIDIA AI Enterprise software and is fully integrated across the NVIDIA ecosystem, with support for the [NVIDIA DGX™ platform](#) (including NVIDIA DGX systems, NVIDIA DGX BasePOD™, NVIDIA DGX SuperPOD™, and DGX OS), [NVIDIA-Certified™ Systems](#), [NVIDIA BlueField® DPUs](#), and [NVIDIA Spectrum Switches](#) with NVIDIA® Cumulus® Linux.

Get Ready to Automate Cluster Management

Find out how NVIDIA Base Command Manager can enable your organization to deploy complete Linux clusters over bare metal and manage them reliably from edge to core to cloud from a single administrative console. Contact your NVIDIA sales representative for more details.

Key Features

- > Support for NVIDIA Quantum InfiniBand and NVIDIA Spectrum™ switches
- > NVIDIA BlueField-2 and BlueField-3 data processing unit support
- > On-demand clusters from leading cloud providers
- > Kubernetes deployments via kubeadm
- > Kubernetes cluster API support
- > Kubernetes MPI, Network, Prometheus operators support
- > Multifactor authentication support for Jupyter Notebooks
- > PostgreSQL and Spark services for Jupyter Notebooks
- > PersistentVolumeClaims for Jupyter Notebooks

Ready to Get Started?

To learn more about NVIDIA Base Command Manager, visit: nvidia.com/base-command-manager

© 2025 NVIDIA Corporation. All rights reserved. NVIDIA, the NVIDIA logo, Base Command, BlueField, Cumulus, DGX, DGX BasePOD, DGX SuperPOD, NVIDIA-Certified Systems, and Spectrum are trademarks and/or registered trademarks of NVIDIA Corporation in the U.S. and other countries. Other company and product names may be trademarks of the respective companies with which they are associated. All other trademarks are property of their respective owners. 3910800. MAY25

